



Institute of Technology Carlow
Students' Union

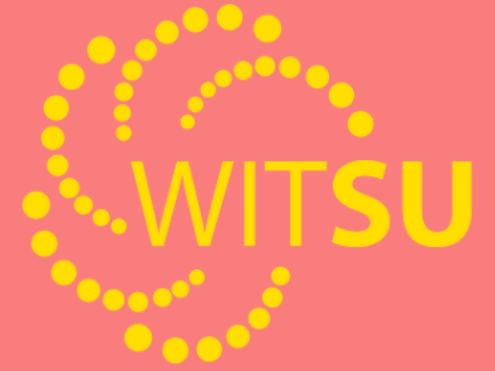


TUSEI Town Hall Meeting

February 19 , 2021

Today's Agenda

- Meet the Team!
- Timeline of work pre 2020/2021 Academic Year
- TUSEISU Project Structure
- Interim Branding
- Challenges ahead
- Collaborative Projects
- Summary and wrap up



Meet the Team



Thomas Drury ITCSU

Thomas Drury
ITCSU President

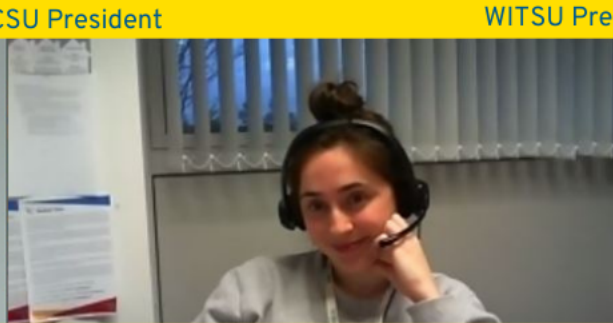


John Fortune
WITSU President

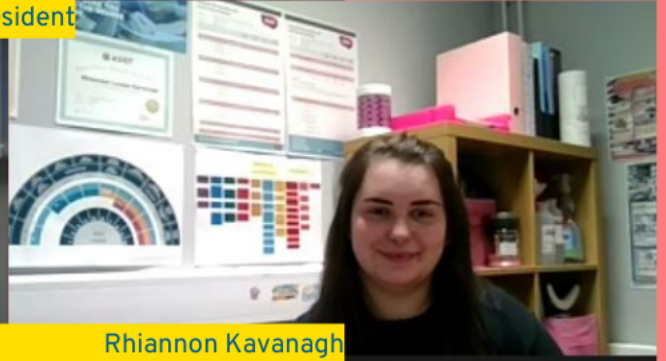


Ben Nolan

Ben Nolan
WITSU Welfare & Equality



Alex Porter
ITCSU Welfare & Equality



Rhiannon Kavanagh
WITSU Education

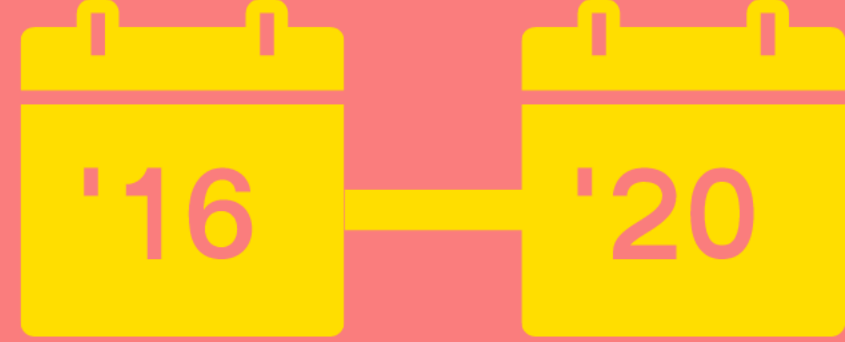


Michael Cahill
ITCSU Entertainment & Communication



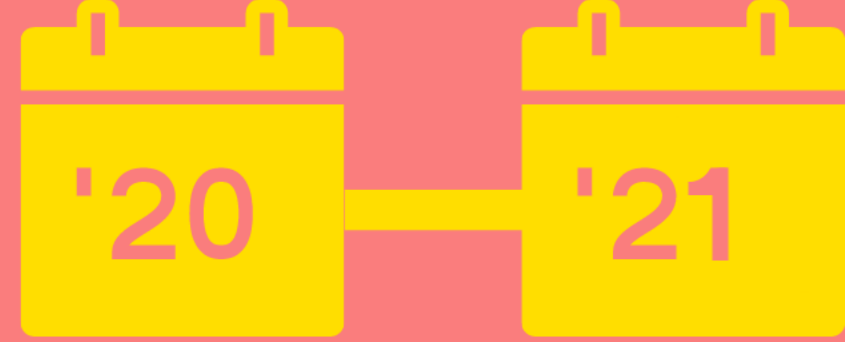
Mark Aulsberry
WITSU Events & Engagement

Timeline of Work



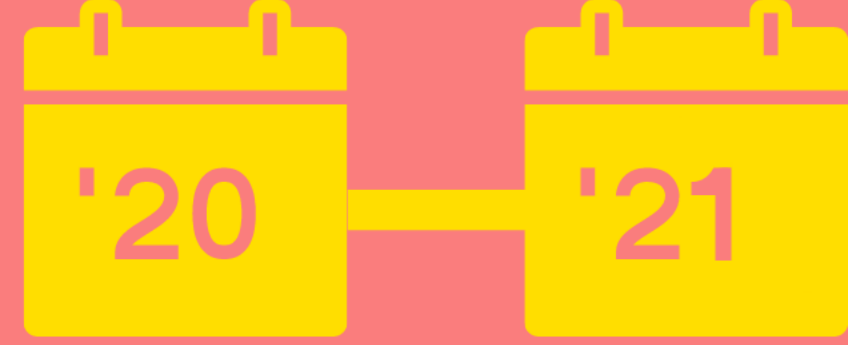
- Many structures suggested
- MOU agreed
- Research on other Institutions
- TU Dublin established as first TU
- Autonomy agreed

TUSEISU Project Structure



1. Working Group 1: Students' Union Formation
2. Working Group 2: Representation
3. Working Group 3: Student Life

Working Group 1



Students' Union Formation

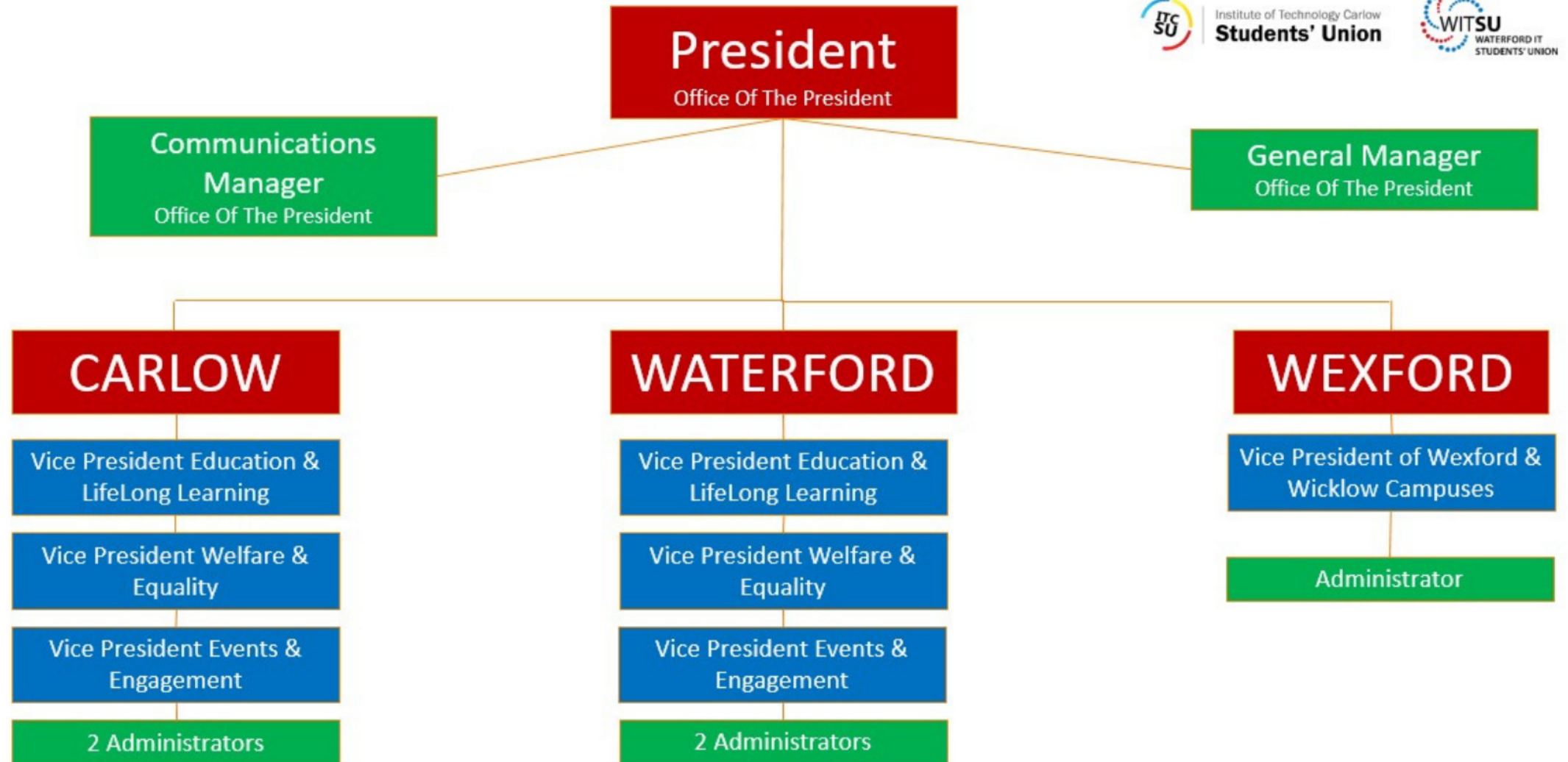
- Voting Systems
- Autonomy
- Constitution
- Funding
- Students' Union Structure



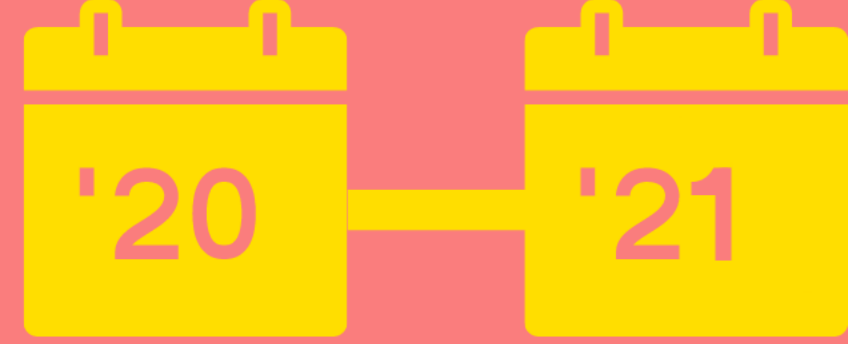
Students' Union Structure



Institute of Technology Carlow
Students' Union

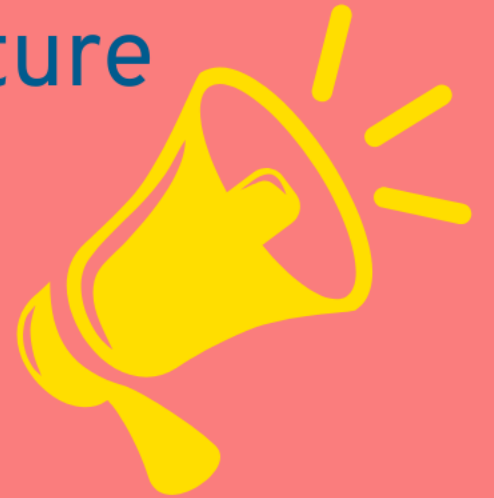


Working Group 2

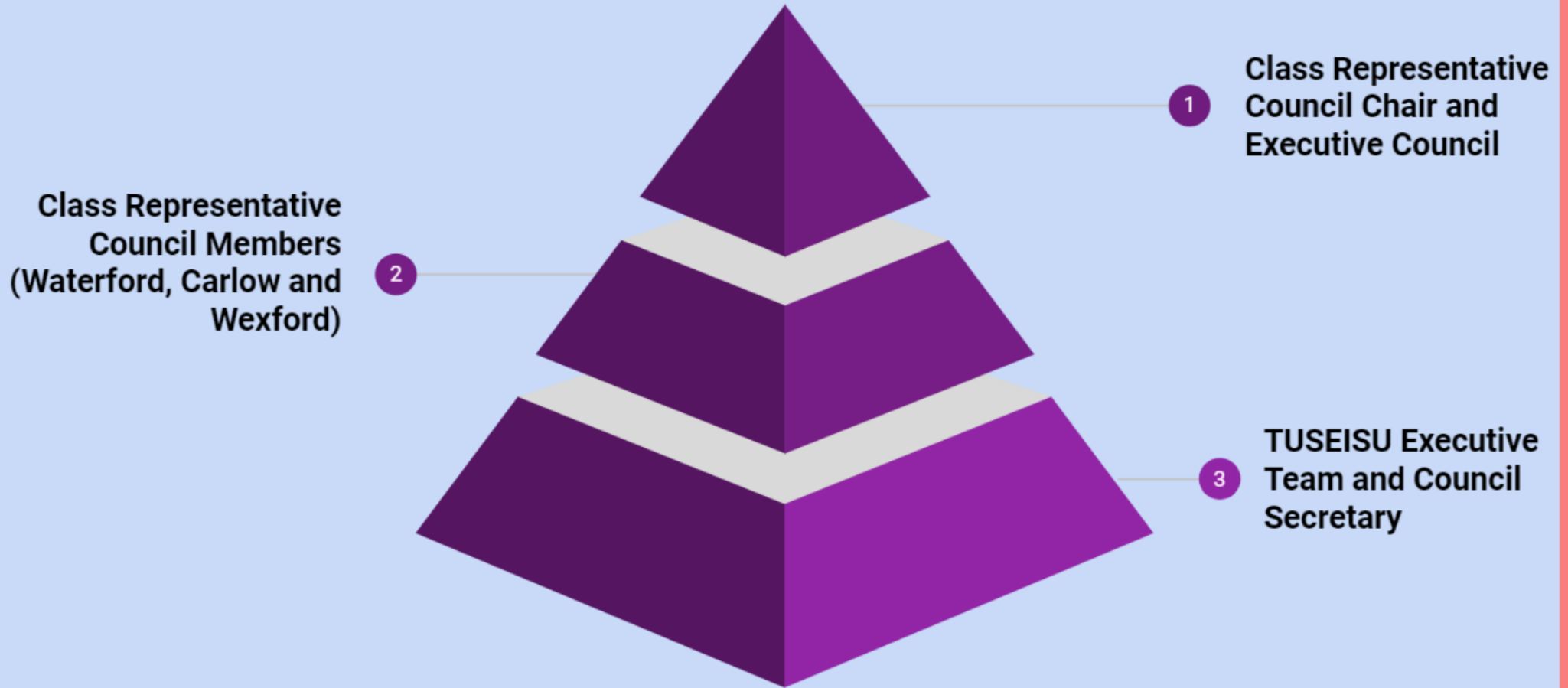


Representation

- Class Representative Elections
- Class Representative Training
- Class Representative Council Structure
- Role of a Class Representative
- Class Representative System



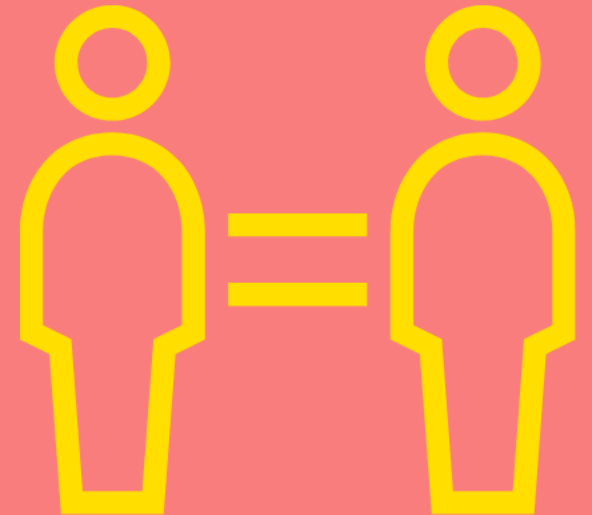
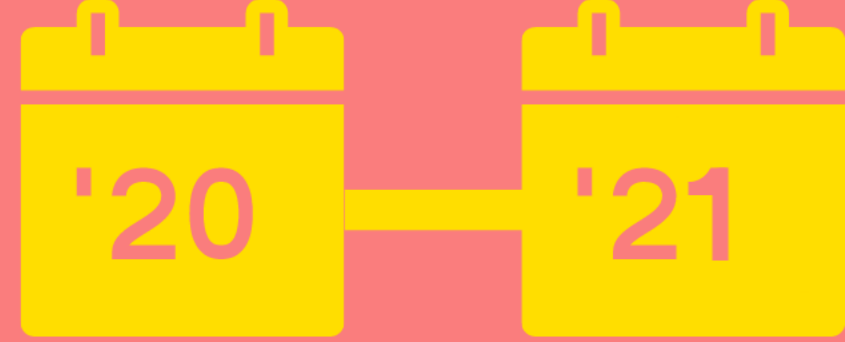
Class Representative System



Working Group 3

Student Life

- Accommodation
- Equality, Diversity, Inclusion
- Clubs & Societies
- Student Charter



Accommodation Strategy

The Current Accommodation Situation:

- Waterford: 426 Campus Accommodation Spaces run by WIT Novus; PBSA Blocks; Private Residential and Digs
- Carlow: No on campus accommodation; lots of PBSA; private houses in different estates; digs in Carlow Town.

Proposed Accommodation Structure for TUSEI:

- Outsourcing
- College Accredited Accommodation (short term)
- 5-10 year Timeline Approach

2021	2022	2023	2024	2025	2026
Put a plan for Accommodation in place	Organize college-accredited properties with across-the-board standards	Appoint an accommodation officer to the two largest campuses; Carlow and Waterford	Bring college accredited approach to smaller campuses i.e wexford & wicklow	Work on draft for new accommodation in carlow campus	Start building new carlow accommodation



Interim Branding



Aontas na Mac Léinn Ollscoil Teicneolaíochta
Oirdheisceart na hÉireann

TUSEISU

Technological University Of The South East of
Ireland Students' Union

Collaborative Projects

TUSEISU Logo

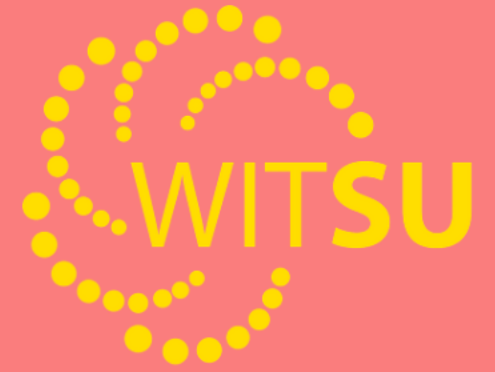
Promo Video

MOU

Constitution

SU Elections

Chinese New Year



Challenges Ahead

Funding

Accommodation Strategy

Stakeholder Awareness

Standardisation

Ensuring Autonomy

Timeframe

Constitution





Thank You!

Any Questions?